

Elizabeth Windsor  
*gardens*



A DAWN PROPERTIES  
LIMITED DEVELOPMENT



Dawn Properties Limited



# BECOME A HOME-OWNER

This development presents a new paradigm for the Marlborough area: All the comforts of a family home in a well designed, secure and private landscaped estate.

Investors, home-seekers and those looking to downsize will almost certainly see a perfect opportunity here.

Secure complex • Borehole water available • Playground and recreational areas







SECURE  
COMPLEX







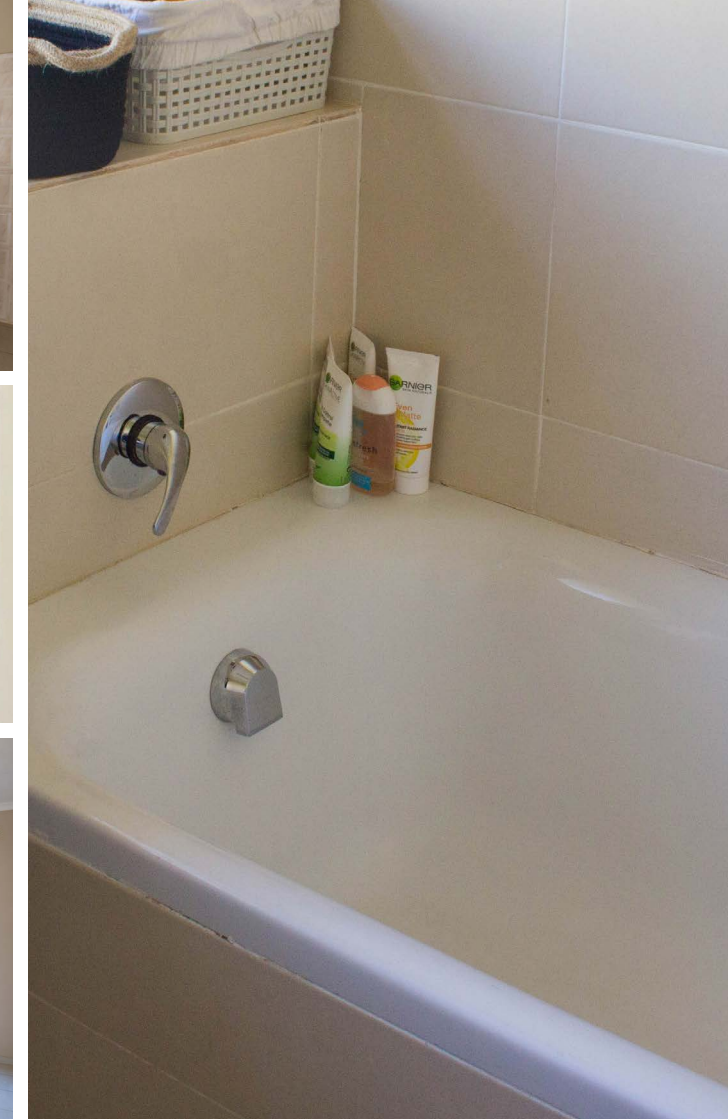
EW

From the moment you step inside one of the Elizabeth Windsor Garden homes, light filled spaces welcome you with a warm feeling of comfort. Generous indoor and outdoor living areas combine to provide convenience and enjoyment.

THE  
COMPLEX



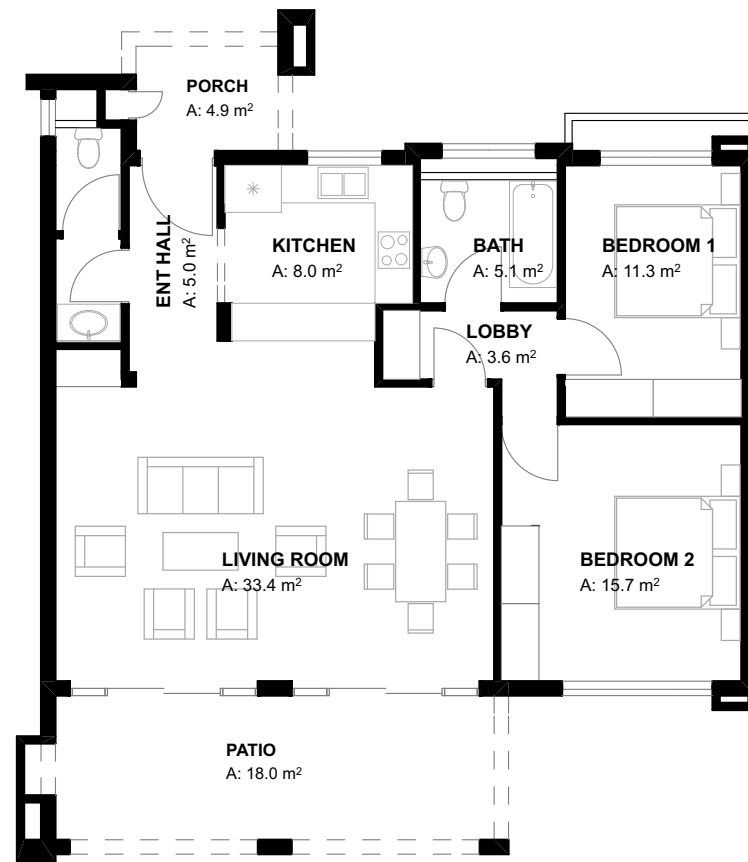
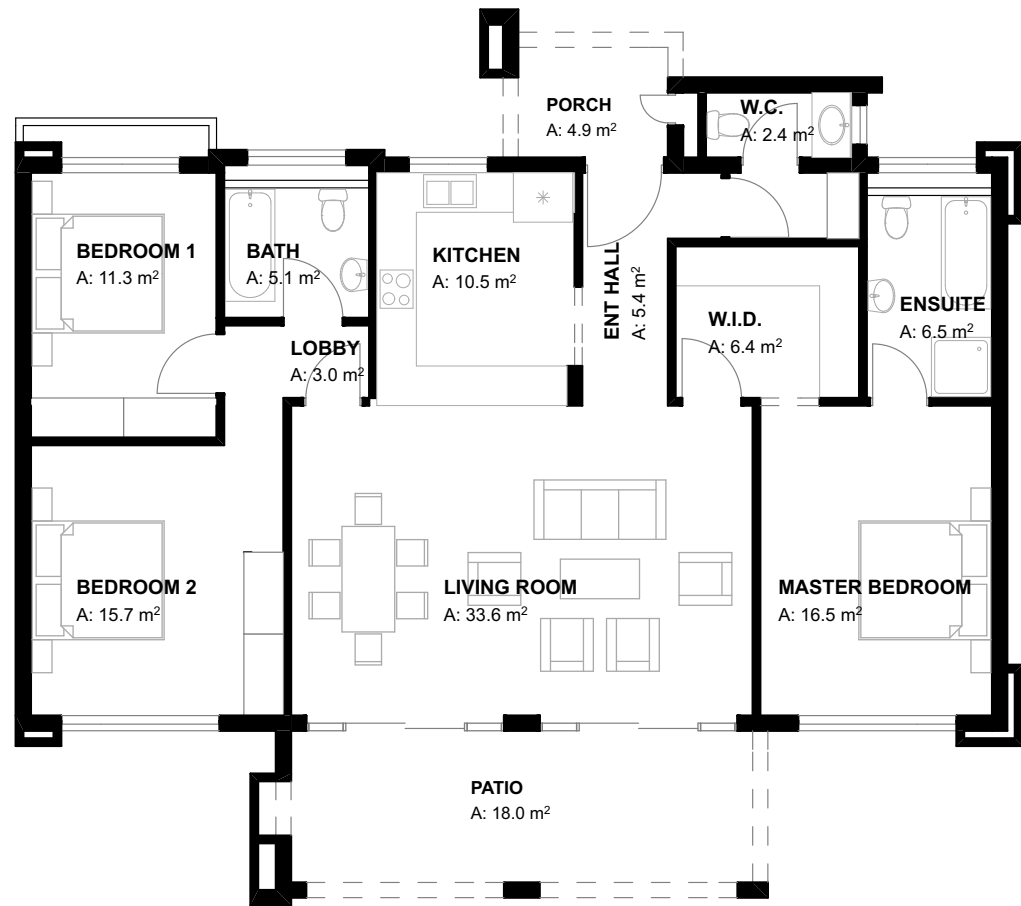




## INDOORS

With stunning features and in a prime location, the homes in Elizabeth Windsor Gardens are surprisingly affordable, with pricing from US\$96,000. This is an excellent investment opportunity not to be missed; contact our sales team to learn more about this exciting development.

3 BEDROOM PLAN



2 BEDROOM PLAN



## A DAWN PROPERTIES LIMITED DEVELOPMENT

### FOR DETAILS CONTACT US AT

Phone: +263(4)707101/5/9, +263(4)706641-4, +263(4)706644  
8th Floor Beverly Court, 100 Nelson Mandela Ave./Fourth St.  
Harare, Zimbabwe

### SALES TEAM MOBILE NUMBERS:

Nancy: +263 775 780 169  
John: +263 785 499 707

